



a TxDOT Project
For immediate release

NEWS RELEASE

EL PASO DISTRICT

Jennifer Wright
(915) 790-4340
Jennifer.Wright3@txdot.gov

November 4, 2016

Closures next week will affect I-10 at Mesa, Resler and Sunland.

I-10 East & West

Overnight

Sunday, Nov. 6 through Thursday, Nov. 10

9 p.m. each night to 5 a.m. each morning

- A left lane on I-10 in both directions will be closed for approximately a half mile at the North Mesa Intersection.

Crews will be working on temporary shoring walls in the area. [Map 2]

Mesa

Daytime

Monday, Nov. 7 through Friday, Nov. 11

9 a.m. to 4 p.m. each day

- A right lane on North Mesa Street (SH 20) will be closed between Remcon Circle to Osborne Drive (in the direction traveling toward Doniphan Drive).

Crews will be boring and potholing for utilities. This area will continue to be the focus of intense work for the next several months while crews transform the intersection, including the I-10 overpass. [Map 2]

I-10 East

Daytime

Monday, Nov. 7 through Friday, Nov. 11

9 a.m. to 4 p.m. each day

- A left lane on I-10 Eastbound will be closed between North Mesa Street (SH 20) and Resler Drive.

Crews will be drilling shafts in the area. [Map 1]

Overnight

Monday, Nov. 7

9 p.m. to 5 a.m. the following morning

- The Resler Entrance Ramp to I-10 Eastbound will be closed.

Motorists should use an alternate entrance ramp to I-10 Eastbound, such as the Sunland Park Entrance Ramp or the North Mesa Entrance Ramp. Crews will be working on a reclaim waterline. [Map 1]

- more -



The Texas Department of Transportation is responsible for maintaining 80,000 miles of road and for supporting aviation, rail, and public transportation across the state. GO 10 is a \$158 million reconstruction of Interstate 10 that spans approximately 6 miles on El Paso's West Side between Executive Center Boulevard and North Mesa Street. GO 10 features the addition of collector-distributor lanes and a new direct connector with Border West Expressway.

Maintain a Safe System • Address Congestion • Best-in-Class State Agency • Connect Texas Communities

An Equal Opportunity Employer

www.go10elpaso.com | facebook.com/go10elpaso | twitter.com/go10ep



a TxDOT Project
For immediate release

NEWS RELEASE

EL PASO DISTRICT

Jennifer Wright
(915) 790-4340
Jennifer.Wright3@txdot.gov

I-10 West

Overnight

Thursday, Nov. 10

9 p.m. to 5 a.m. the following morning

- I-10 Westbound will be completely closed at the Sunland Park Exit Ramp (Exit 13).

Crews will be pouring bridge deck over I-10. [Map 1]

Detour Route: Traffic will exit I-10 Westbound at Sunland Park (Exit 13) and re-enter I-10 prior to the Sunland Park Overpass. Follow the detour signs in place.

###

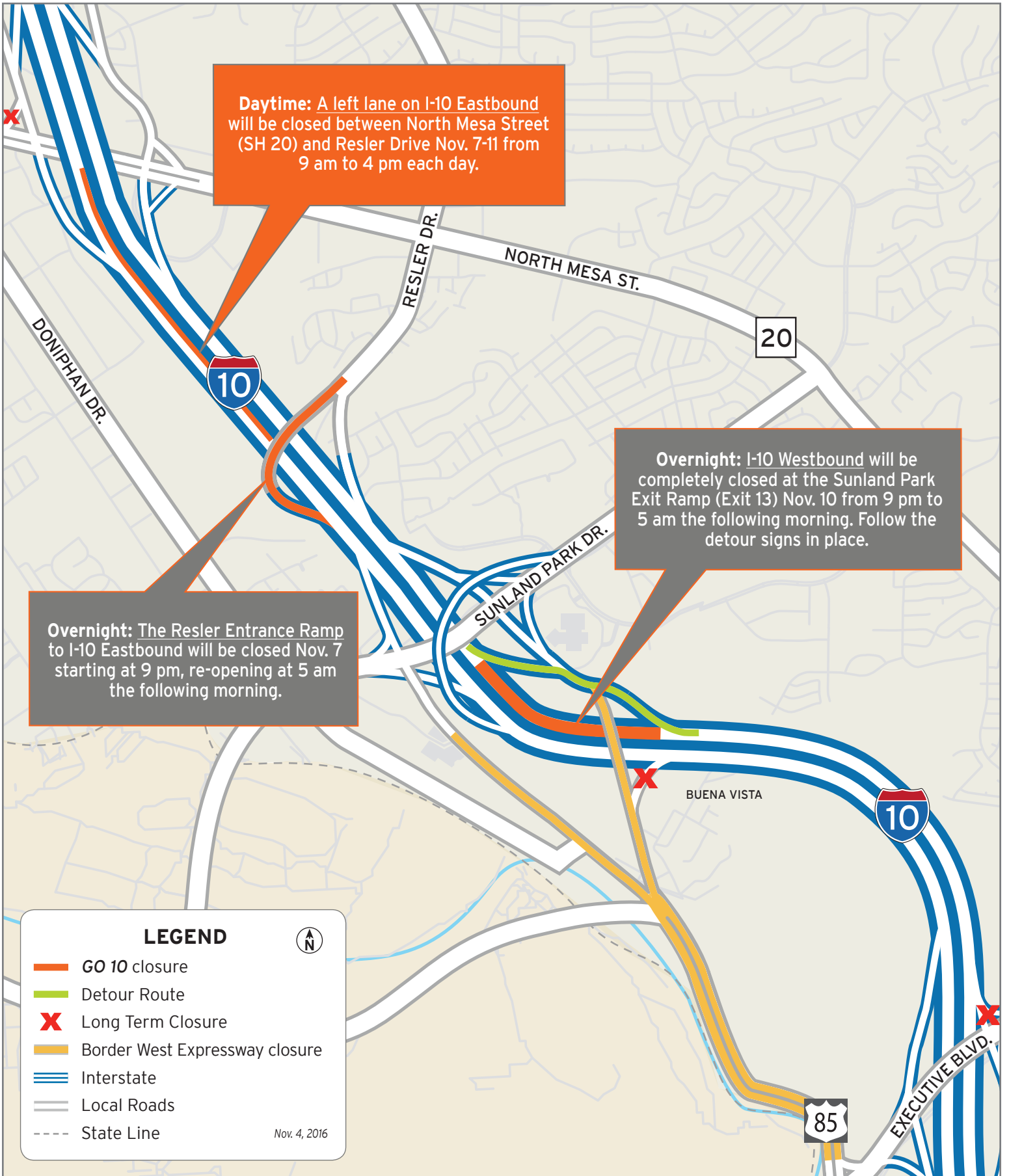


The Texas Department of Transportation is responsible for maintaining 80,000 miles of road and for supporting aviation, rail, and public transportation across the state. GO 10 is a \$158 million reconstruction of Interstate 10 that spans approximately 6 miles on El Paso's West Side between Executive Center Boulevard and North Mesa Street. GO 10 features the addition of collector-distributor lanes and a new direct connector with Border West Expressway.

Maintain a Safe System • Address Congestion • Best-in-Class State Agency • Connect Texas Communities

An Equal Opportunity Employer

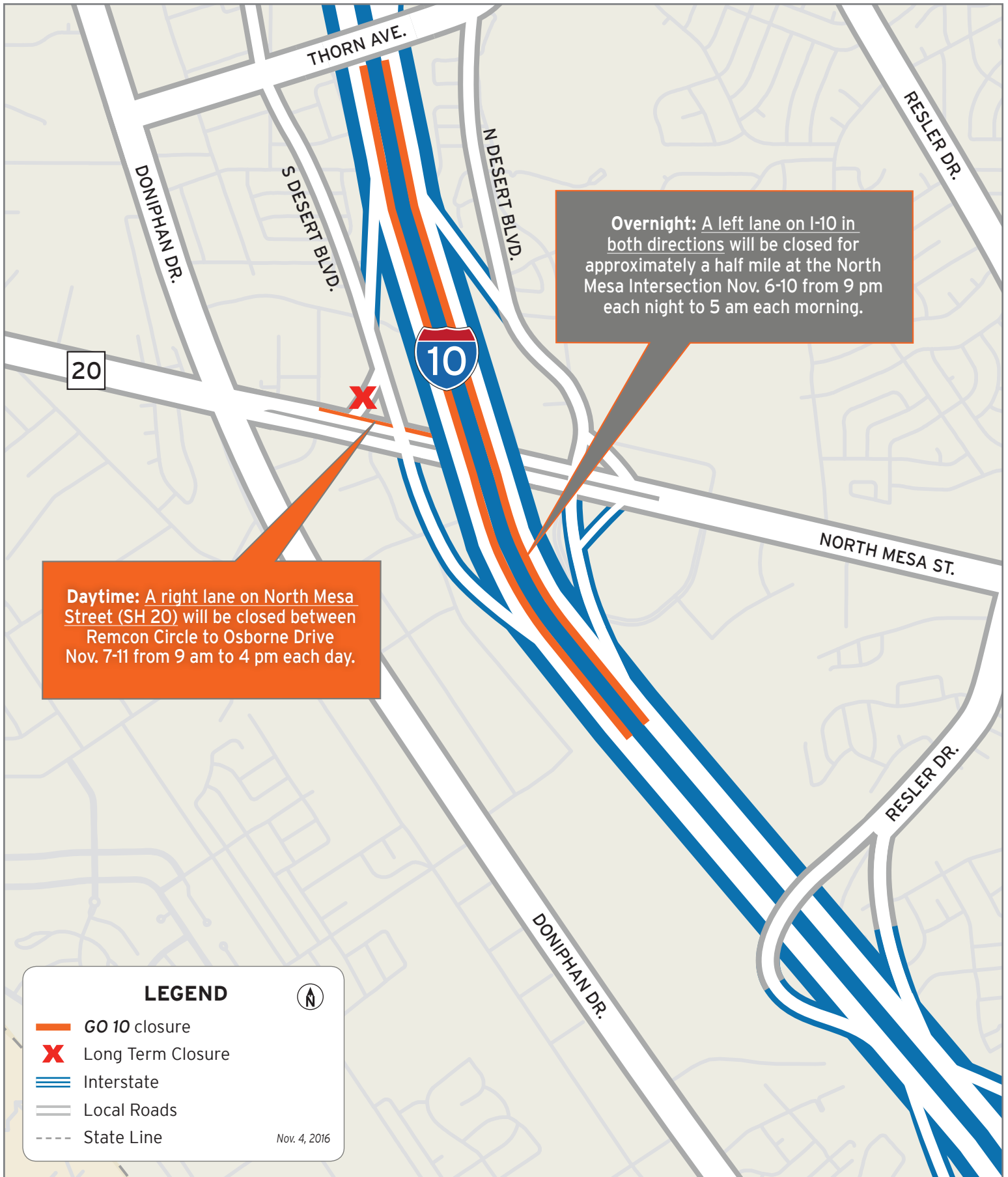
www.go10elpaso.com | facebook.com/go10elpaso | twitter.com/go10ep








Closures will affect I-10

Map 1 of 2





LEGEND

-  GO 10 closure
-  Long Term Closure
-  Interstate
-  Local Roads
-  State Line

Nov. 4, 2016



I-10 East & West reduces at Mesa

Map 2 of 2

