



a TxDOT Project
For immediate release

NEWS RELEASE

EL PASO DISTRICT

Jennifer Wright
(915) 790-4340
Jennifer.Wright3@txdot.gov

October 28, 2016

I-10 East will be reduced to one lane for five nights. I-10 West will close completely for one night.

I-10 East

Overnight

Sunday, Oct. 30 through Thursday, Nov. 3
9 p.m. each night to 5 a.m. each morning

- I-10 Eastbound will be reduced to one lane for approximately a half mile starting at the North Mesa Overpass.

Crews will be working on temporary shoring walls in the area. [Map 2]

Mesa

Daytime

Monday, Oct. 31 through Friday, Nov. 4
9 a.m. to 4 p.m. each day

- A right lane on North Mesa Street (SH 20) will be closed between Remcon Circle to Osborne Drive (in the direction traveling toward Doniphan Drive).

Crews will be boring and potholing for utilities. This area will continue to be the focus of intense work for the next several months while crews transform the intersection, including the I-10 bridge. [Map 2]

I-10 West

Overnight

Tuesday, Nov. 1
9 p.m. to 5 a.m.

- I-10 Westbound will be completely closed between the Executive Overpass and the Sunland Overpass.

Crews will be tackling various activities, including removing overpass signage, setting barrier, removing illumination poles, repairing potholes, replacing reflectors on barrier walls, and more. [Map 1]

more



The Texas Department of Transportation is responsible for maintaining 80,000 miles of road and for supporting aviation, rail, and public transportation across the state. GO 10 is a \$158 million reconstruction of Interstate 10 that spans approximately 6 miles on El Paso's West Side between Executive Center Boulevard and North Mesa Street. GO 10 features the addition of collector-distributor lanes and a new direct connector with Border West Expressway.

Maintain a Safe System • Address Congestion • Best-in-Class State Agency • Connect Texas Communities

An Equal Opportunity Employer

www.go10elpaso.com | facebook.com/go10elpaso | twitter.com/go10ep



a TxDOT Project
For immediate release

NEWS RELEASE

EL PASO DISTRICT

Jennifer Wright
(915) 790-4340
Jennifer.Wright3@txdot.gov

Detour Route: Traffic will exit I-10 Westbound at Executive Center Boulevard (Exit 16), take North Mesa Street (SH 20) to Sunland Park Drive, then re-enter I-10 Westbound at the Sunland Park Entrance Ramp. Follow the detour signs in place.

###



The Texas Department of Transportation is responsible for maintaining 80,000 miles of road and for supporting aviation, rail, and public transportation across the state. GO 10 is a \$158 million reconstruction of Interstate 10 that spans approximately 6 miles on El Paso's West Side between Executive Center Boulevard and North Mesa Street. GO 10 features the addition of collector-distributor lanes and a new direct connector with Border West Expressway.

Maintain a Safe System • Address Congestion • Best-in-Class State Agency • Connect Texas Communities

An Equal Opportunity Employer

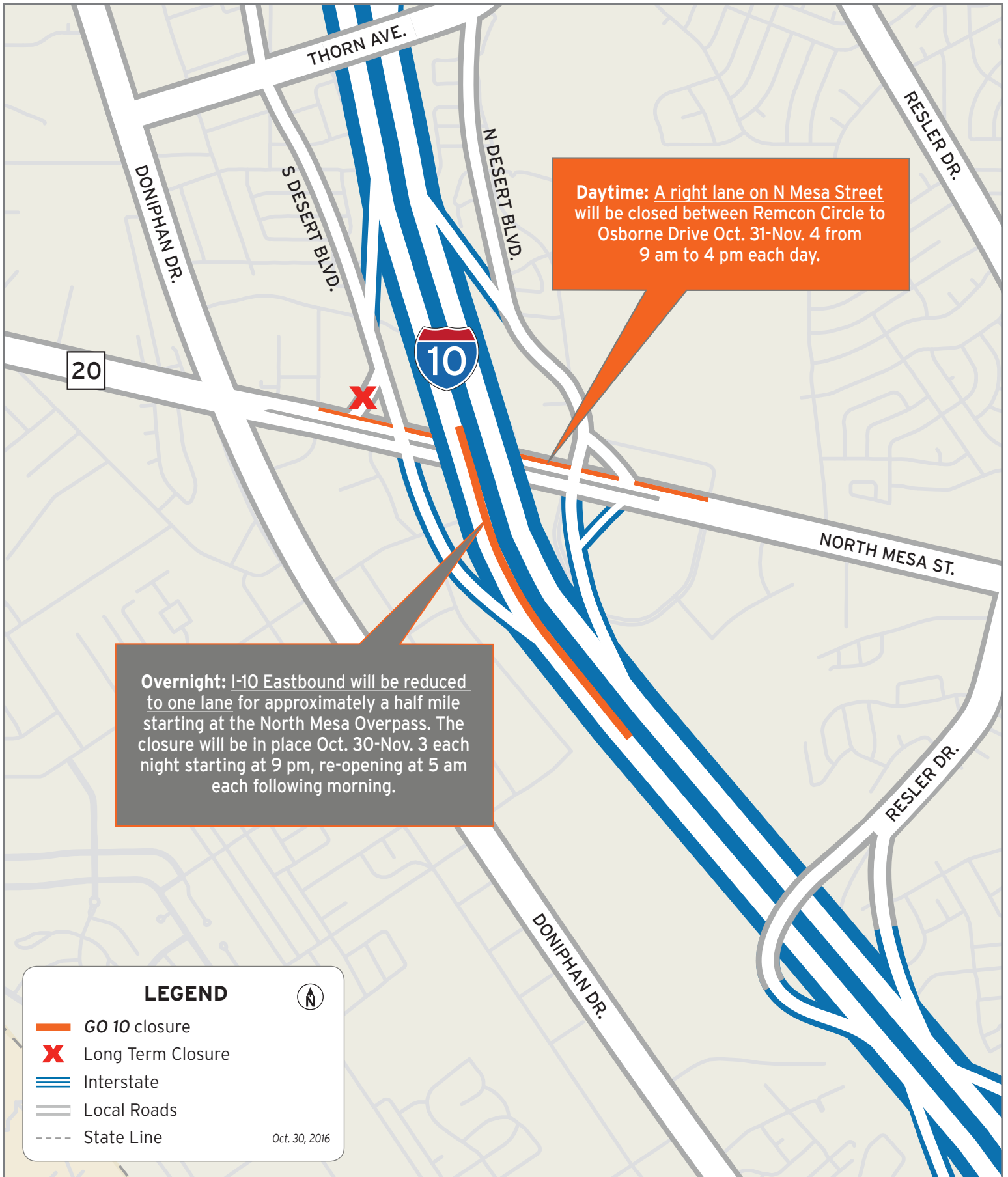
www.go10elpaso.com | facebook.com/go10elpaso | twitter.com/go10ep



I-10 West will close completely

Map 1 of 2





I-10 East reduces to one lane

Map 2 of 2

