



a TxDOT Project
For immediate release

NEWS RELEASE

EL PASO DISTRICT

Jennifer Wright
(915) 790-4340
Jennifer.Wright3@txdot.gov

January 19, 2018

Expect delays on I-10 between Asarco and North Mesa this weekend Paisano (US 85) remains closed at Sunland Park

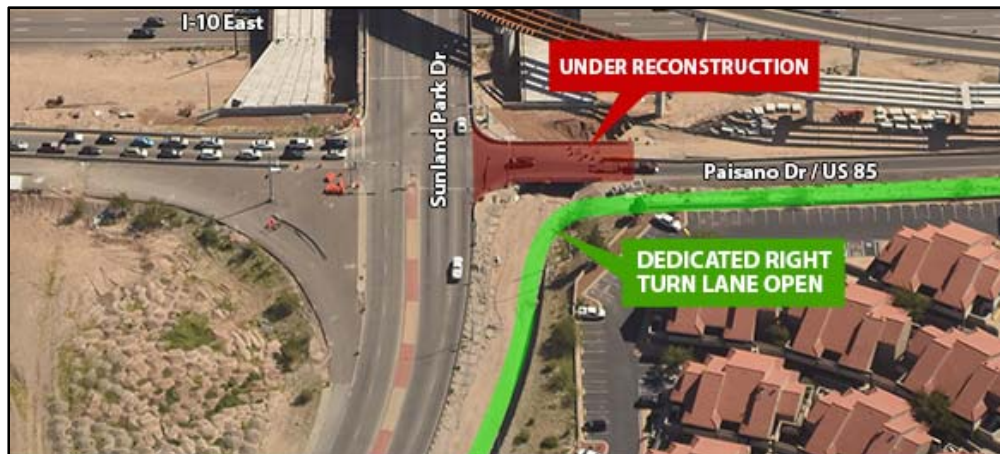
Paisano (US 85) @ Sunland

Ongoing – 24/7

Jan. 15 through Feb. 11

- Paisano Drive (US 85) will remain closed at Sunland Park Drive.
- Sunland Park Drive will be kept to two lanes starting at Constitution Drive all the way up to the Paisano Drive (US 85) intersection.

Motorists on Sunland Park Drive (coming from Doniphan Drive) will have access to a dedicated right-turn lane onto the Paisano Drive (US 85) and entrance ramp to I-10 Eastbound.



To help mitigate roadway congestion in this area, motorists should consider using an alternate entrance ramp to I-10 Eastbound.

Business Access: Motorists will be able to access area businesses from Sunland Park Drive as well as from Constitution Drive and Crockett Street.

Crews are demolishing and re-building a section of Paisano Drive (US 85). [No Map]

page 1 of 4



The Texas Department of Transportation is responsible for maintaining 80,000 miles of road and for supporting aviation, rail, and public transportation across the state. GO 10 is a \$158 million reconstruction of Interstate 10 that spans approximately 6 miles on El Paso's West Side between Executive Center Boulevard and North Mesa Street. GO 10 features the addition of collector-distributor lanes and a new direct connector with Border West Expressway.

Maintain a Safe System • Address Congestion • Best-in-Class State Agency • Connect Texas Communities

An Equal Opportunity Employer

www.go10elpaso.com | facebook.com/go10elpaso | twitter.com/go10ep



a TxDOT Project
For immediate release

NEWS RELEASE

EL PASO DISTRICT

Jennifer Wright
(915) 790-4340
Jennifer.Wright3@txdot.gov

I-10 Both Directions



Daytime

Saturday, Jan. 20 and Sunday, Jan. 21

9 a.m. to 4 p.m. each day

- Seven miles of I-10 in both directions will experience a moving closure between Thorn Avenue (mile marker 10) and the Asarco bridge (mile marker 17).

Crews will implement a five-mile-per-hour convoy to re-stripe I-10. Expect delays. [No Map]

I-10 East @ Sunland

Three Nights

Sunday, Jan. 21 through Tuesday, Jan. 23

9 p.m. each night to 6 a.m. each morning

- I-10 Eastbound will close completely between North Mesa Street (Exit 11) and Sunland Park Drive.
- The North Mesa Street entrance ramp to I-10 Eastbound will close.
- The Resler Drive entrance ramp to I-10 Eastbound will close.
- The Sunland Park flyover entrance ramp to I-10 Eastbound will close.

Detour: Motorists on I-10 Eastbound will exit at North Mesa Street (Exit 11) and be routed to Doniphan Drive, then to Sunland Park Drive where motorists may re-enter I-10 Eastbound. Follow the detour signs.

Crews will be working on the all-new US 85 overpass and removing overhead signs from I-10. [Map 1]

North Mesa

Daytime

Monday, Jan. 22 through Friday, Feb. 2

9 a.m. to 4 p.m. weekdays only

- The right lane on North Mesa Street (SH 20) will close from North Desert Blvd to Osborne Drive.

Crews will be construction new roadways that connect to North Mesa Street (SH 20). [No Map]

page 2 of 4



The Texas Department of Transportation is responsible for maintaining 80,000 miles of road and for supporting aviation, rail, and public transportation across the state. GO 10 is a \$158 million reconstruction of Interstate 10 that spans approximately 6 miles on El Paso's West Side between Executive Center Boulevard and North Mesa Street. GO 10 features the addition of collector-distributor lanes and a new direct connector with Border West Expressway.

Maintain a Safe System • Address Congestion • Best-in-Class State Agency • Connect Texas Communities

An Equal Opportunity Employer

www.go10elpaso.com | facebook.com/go10elpaso | twitter.com/go10ep



a TxDOT Project
For immediate release

NEWS RELEASE

EL PASO DISTRICT

Jennifer Wright
(915) 790-4340
Jennifer.Wright3@txdot.gov

Sunland Park Drive

Two Nights

Tuesday, Jan. 23 and Wednesday, Jan. 24

9 p.m. each night to 6 a.m. each morning

- Sunland Park Drive (southbound, moving toward Doniphan Drive) will be reduced to one lane for approximately 800 feet between I-10 and Machuca Road.

Crews will be setting barrier walls along Sunland Park Drive. [Map 2]

I-10 West @ Executive

Two Nights

Wednesday, Jan. 24 and Thursday, Jan. 25

9 p.m. each night to 6 a.m. each morning

- I-10 Westbound will close completely between Executive Center Boulevard (Exit 16) and Sunland Park Drive.
- The Schuster/UTEP entrance ramp to I-10 Westbound will close.
- The Paisano Drive entrance ramp to I-10 Eastbound (in front of the auto dealerships) will close.
- Crockett Street access to Paisano Drive will not be available.

Detours:

- I-10 Westbound traffic will exit at Executive Center Boulevard (Exit 16) and take North Mesa Street (SH 20) to Sunland Park Drive where motorists may re-enter I-10 Westbound.
- Motorists won't be able to enter I-10 Eastbound from Paisano Drive (US 85) so they will be detoured to North Mesa Street (SH 20), then to Executive Center Boulevard, then to the Executive Center entrance ramp to I-10 Eastbound.

Crews will be working on the all-new US 85 overpass. [Map 3]

page 3 of 4



The Texas Department of Transportation is responsible for maintaining 80,000 miles of road and for supporting aviation, rail, and public transportation across the state. GO 10 is a \$158 million reconstruction of Interstate 10 that spans approximately 6 miles on El Paso's West Side between Executive Center Boulevard and North Mesa Street. GO 10 features the addition of collector-distributor lanes and a new direct connector with Border West Expressway.

Maintain a Safe System • Address Congestion • Best-in-Class State Agency • Connect Texas Communities

An Equal Opportunity Employer

www.go10elpaso.com | facebook.com/go10elpaso | twitter.com/go10ep



a TxDOT Project
For immediate release

NEWS RELEASE

EL PASO DISTRICT

Jennifer Wright
(915) 790-4340
Jennifer.Wright3@txdot.gov

CLOSURE FORECAST

The following closures are still developing, meaning details may change.

Overnight

Sunday, Jan. 28 through Tuesday, Jan. 30

9 p.m. each night to 6 a.m. each morning

- I-10 Eastbound will close completely between North Mesa Street (Exit 11) and Sunland Park Drive.
- The North Mesa Street entrance ramp to I-10 Eastbound will close.
- The Resler Drive entrance ramp to I-10 Eastbound will close.
- The Sunland Park flyover entrance ramp to I-10 Eastbound will close.

Overnight

Wednesday, Jan. 31 and Thursday, Feb. 1

9 p.m. each night to 6 a.m. each morning

- I-10 Westbound will close completely between Executive Center Boulevard (Exit 16) and Sunland Park Drive.
- The Schuster/UTEP entrance ramp to I-10 Westbound will close.
- The Paisano Drive entrance ramp to I-10 Eastbound (in front of the auto dealerships) will close.
- Crockett Street access to Paisano Drive will not be available.

All closures are subject to change.

All closure times are approximate.

Exit and entrance ramps may close up to one hour prior to the start time of an I-10 closure.

page 4 of 4



The Texas Department of Transportation is responsible for maintaining 80,000 miles of road and for supporting aviation, rail, and public transportation across the state. GO 10 is a \$158 million reconstruction of Interstate 10 that spans approximately 6 miles on El Paso's West Side between Executive Center Boulevard and North Mesa Street. GO 10 features the addition of collector-distributor lanes and a new direct connector with Border West Expressway.

Maintain a Safe System • Address Congestion • Best-in-Class State Agency • Connect Texas Communities

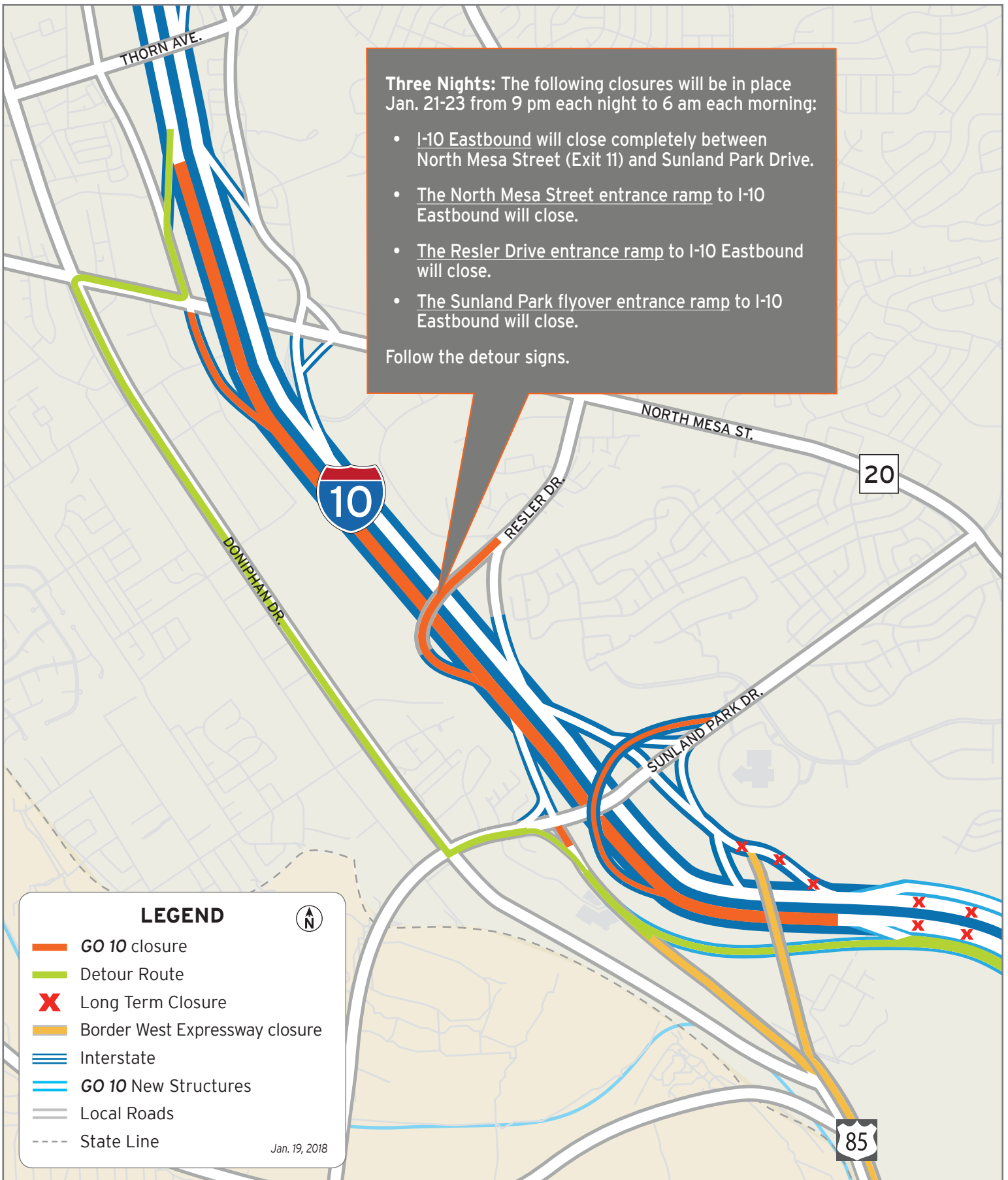
An Equal Opportunity Employer

www.go10elpaso.com | facebook.com/go10elpaso | twitter.com/go10ep

Three Nights: The following closures will be in place Jan. 21-23 from 9 pm each night to 6 am each morning:

- I-10 Eastbound will close completely between North Mesa Street (Exit 11) and Sunland Park Drive.
- The North Mesa Street entrance ramp to I-10 Eastbound will close.
- The Resler Drive entrance ramp to I-10 Eastbound will close.
- The Sunland Park flyover entrance ramp to I-10 Eastbound will close.

Follow the detour signs.



LEGEND



- GO 10 closure
- Detour Route
- Long Term Closure
- Border West Expressway closure
- Interstate
- GO 10 New Structures
- Local Roads
- State Line

Jan. 19, 2018

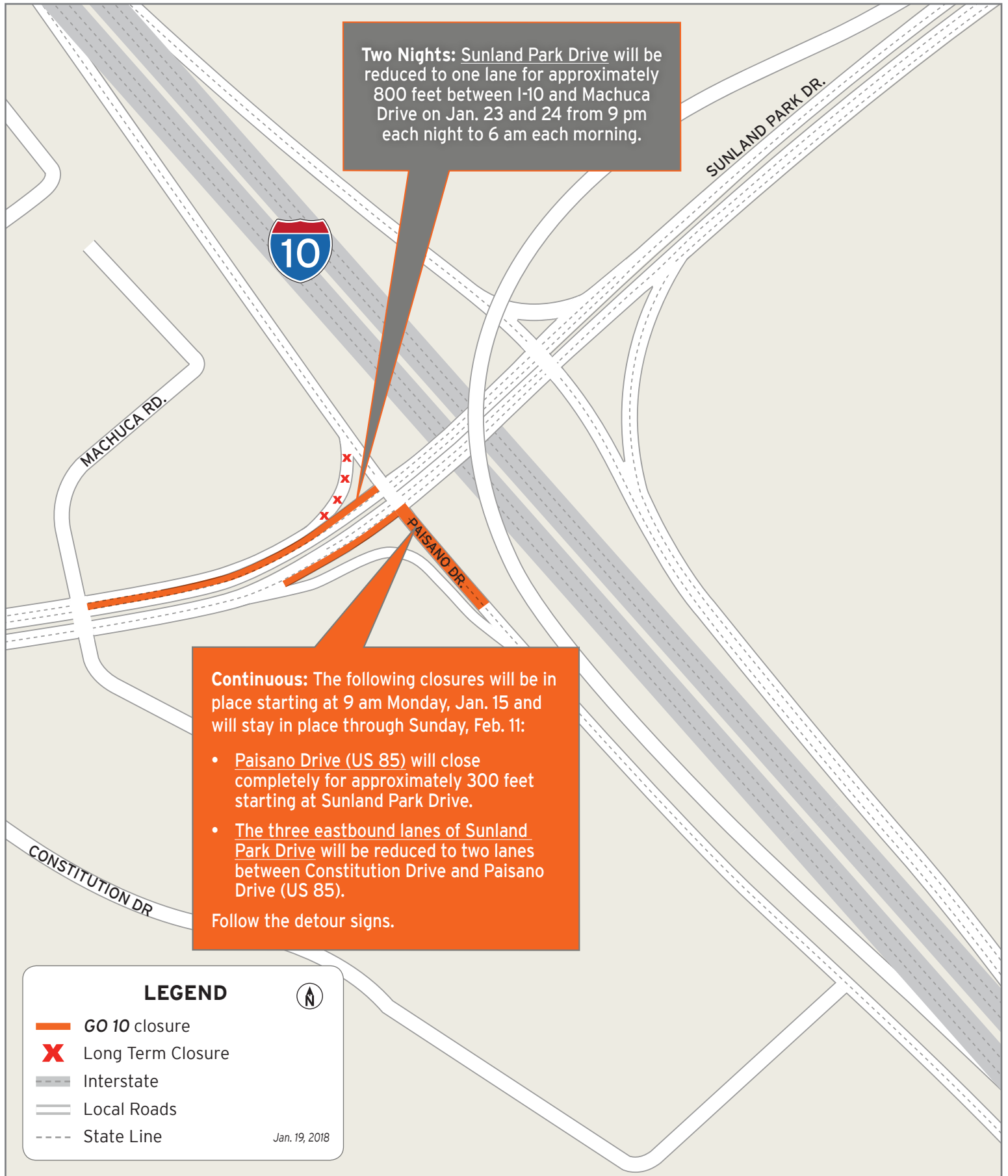


I-10 East closes at N Mesa

Map 1 of 3



Two Nights: Sunland Park Drive will be reduced to one lane for approximately 800 feet between I-10 and Machuca Drive on Jan. 23 and 24 from 9 pm each night to 6 am each morning.







Continuous: The following closures will be in place starting at 9 am Monday, Jan. 15 and will stay in place through Sunday, Feb. 11:

- Paisano Drive (US 85) will close completely for approximately 300 feet starting at Sunland Park Drive.
- The three eastbound lanes of Sunland Park Drive will be reduced to two lanes between Constitution Drive and Paisano Drive (US 85).

Follow the detour signs.

LEGEND

-  GO 10 closure
-  Long Term Closure
-  Interstate
-  Local Roads
-  State Line

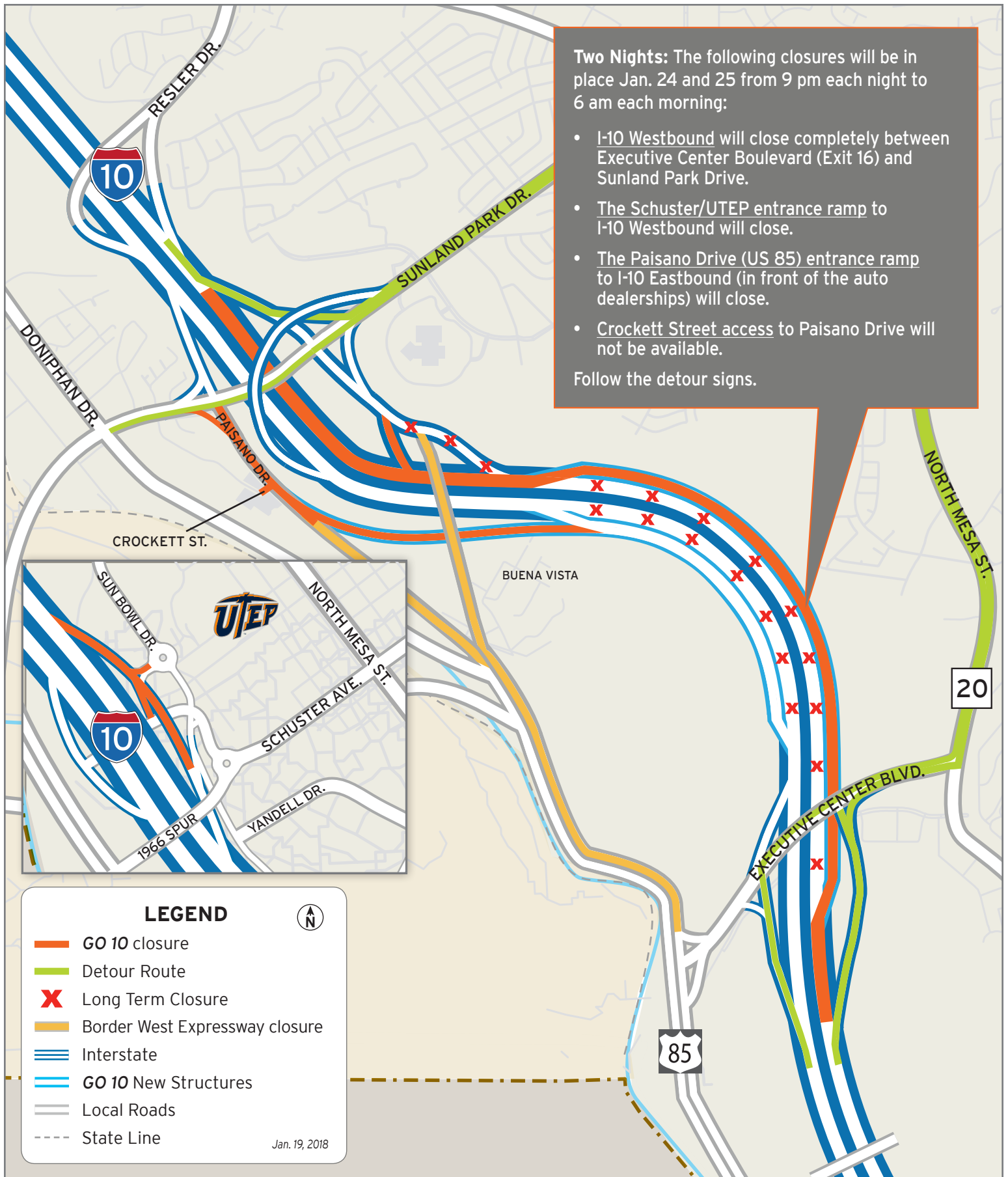
Jan. 19, 2018



Closures on Sunland Park Drive

Map 2 of 3





Two Nights: The following closures will be in place Jan. 24 and 25 from 9 pm each night to 6 am each morning:

- I-10 Westbound will close completely between Executive Center Boulevard (Exit 16) and Sunland Park Drive.
- The Schuster/UTEP entrance ramp to I-10 Westbound will close.
- The Paisano Drive (US 85) entrance ramp to I-10 Eastbound (in front of the auto dealerships) will close.
- Crockett Street access to Paisano Drive will not be available.

Follow the detour signs.

LEGEND

- GO 10 closure
- Detour Route
- Long Term Closure
- Border West Expressway closure
- Interstate
- GO 10 New Structures
- Local Roads
- State Line

Jan. 19, 2018



I-10 West closes at Executive

Map 3 of 3

